

Lab 6

Tutorial

Alexander Bahr

1-11-2017

Collective Decision

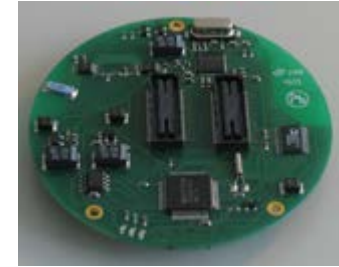
- Consensus
 - System converges, even though there is no “leader”
 - The *value* of the final consensus cannot be predicted
 - Each individual makes the best choice it can with the information available to it, and adjusts as necessary

Partial Perception

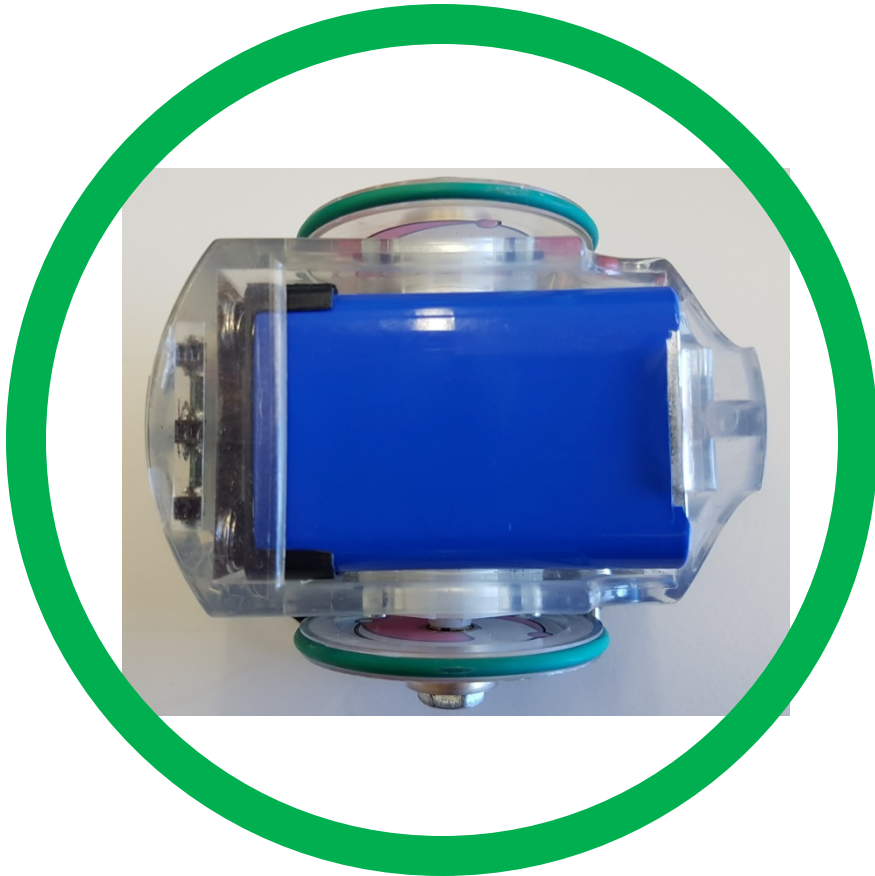
- If all agents have perfect & complete knowledge of the system state, solution is trivial
 - i.e. majority vote
- But, this is usually not the case...
 - Local information → local decision
 - Well-mixed → eventual convergence

Hardware

- Each group of 2 will receive:
 - 2 e-puck robots
 - 2 batteries
 - 2 radio modules
 - 1 USB-Bluetooth dongle
 - 4 walls
 - 4 stands
 - 0.5 MICAz



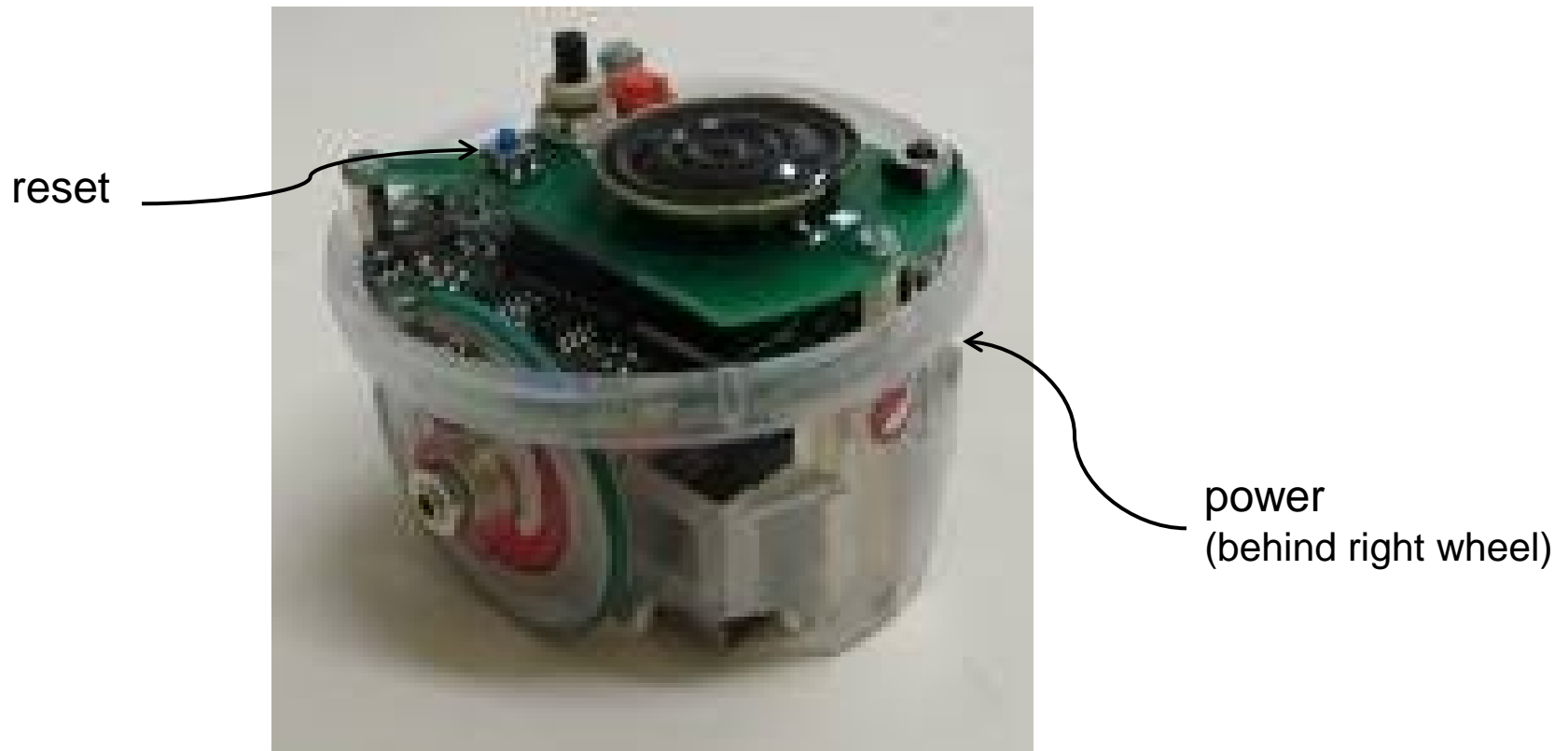
e-puck: insert battery



If you can see the serial number it's wrong

e-puck: Reminder

You will need to use 2 buttons on the robot:



Also: watch for the power (green) and the low-power LED (red)

Technical notes

E-puck part

- Communication board should be sandwiched between e-puck base & speaker board
- Calibrate IR sensors as indicated
- Watch for the low battery light

